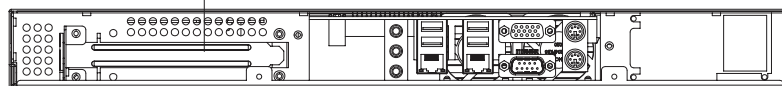


Model NO	D-118V2-ITX-DT
Ext	-----
Hdd	3.5"x1(2.5"x2 Option)
M/B	6.7"x6.7"
Fan	4.0CMx2 (optional)
Slot	1
Rev	

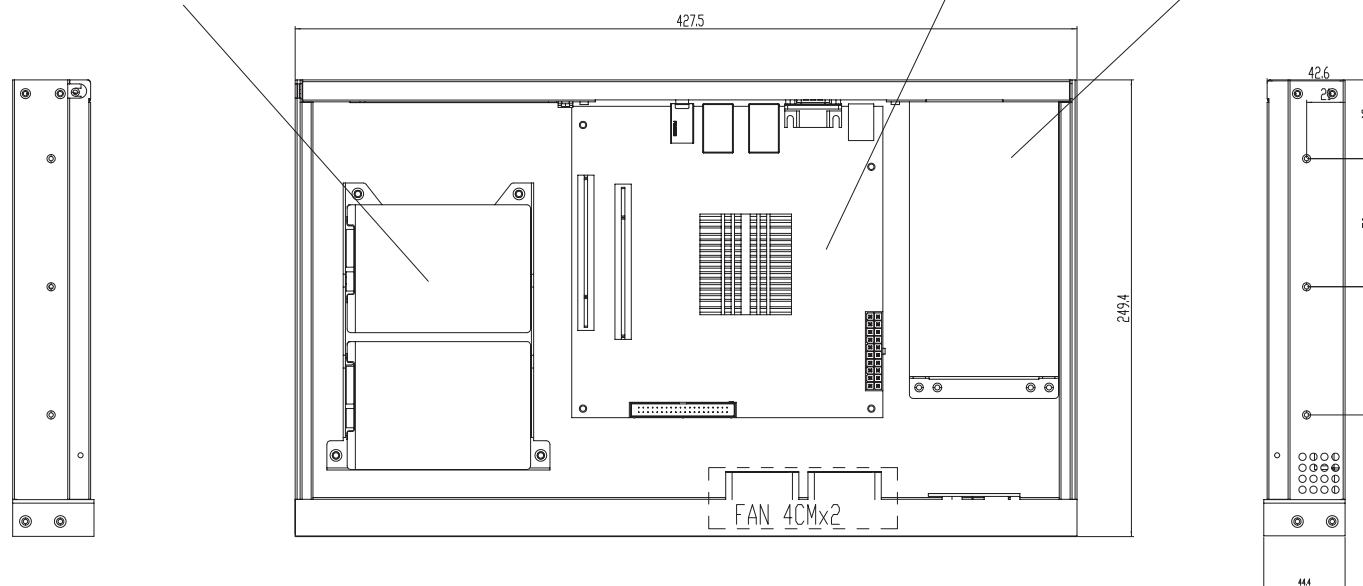
1 x Expansion Slots



2.5"HDD x 2 or 3.5"HDD x 1

6.7" x 6.7" mini-ITX

1U Flex PSU



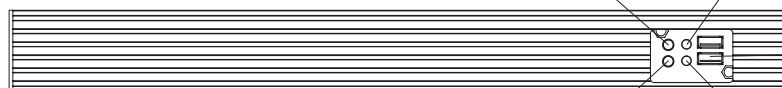
Power switch

Power LED

USB2.0 x 2

Reset

HDD LED



- NOTE:
1. 材质要求环保 (RoHS);
 2. 粉烤黑色;

DATE	SSCC TLD	REV	AD	HW	BY
FINISH	SEE NOTE	0-04	AD	AD	MEET
DRAWN	Richard	12-01-08	0-10	AD	DALE
DESIGN	Richard	12-01-08	10-08	AD	DALE
CHECKED	...	01-08	AD	AD	DALE
APPROVED	...	10-05	AD	AD	DALE