

T-5K3525U-SA 1 x 5.25" to 4 x 2.5" SATA Hot-Swap Trayless Drive Cage

User's Manual



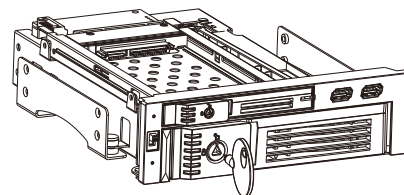
Switching key

Triangular lock unlock with the key
(clockwise rotated 90 degrees),

LOCK

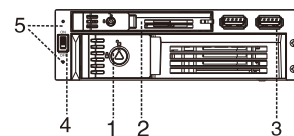


A: Lock
B: Unlock



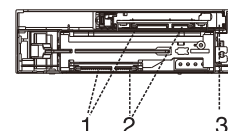
Front panel

1. 3.5" HDD door
2. 2.5" HDD door
3. USB Ports
4. Power switch
5. LED indicator



Rear panel

1. SATA power connector
2. SATA data connector
3. LED and power access port



T-5K3525U-SA Manual

Features:

- Accommodates both 2.5" and 3.5" hard drives
- Two USB3.0 ports
- Supports hot swaps (Need mainboard support)
- Unique anti-shock design patented tool free mechanism
- The connector gives over 50,000 cycle hot swaps
- LED indicator to show power and HDD activity
- HDD power switch in the front(control dual HDD)

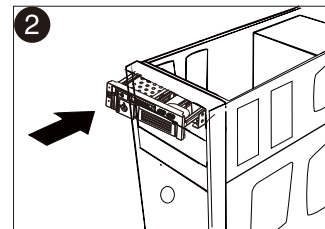
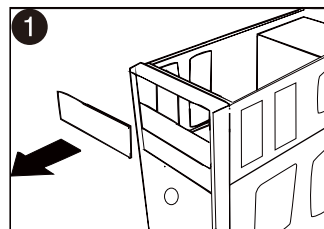
Specifications:

- Fit both 2.5" and 3.5" Serial ATA hard drives
- Supports hot swap(Need mainboard support)
- Supports SATA III (6.0Gb/s)
- Housing Assembly: 198(L)X148(W)X42(H)mm
/ 7.80"x 5.83"x 1.65"
- Interface: SATA /USB3.0
- Weight: 420g/ 0.93lb
- Operating Temperature: 0~55°C / 32~131°F

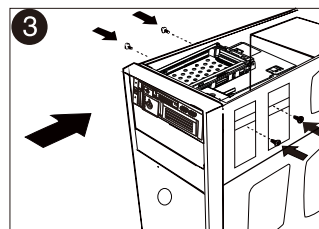
Package Content:

T-5K3525U-SA	1Pcs
SATA data cable	2Pcs
User's Manual	1Pcs
Screws	4Pcs
Key	1Pcs

Installation:



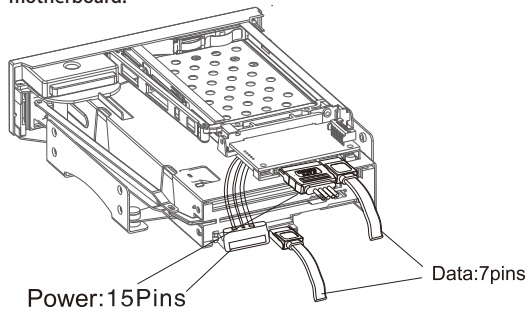
- 1.Remove the cover of an empty drive bay.
- 2.Smoothly insert T-5K3525U-SA HDD cage into the bay and push it inward until its screw holes are aligned with the holes of the bay.



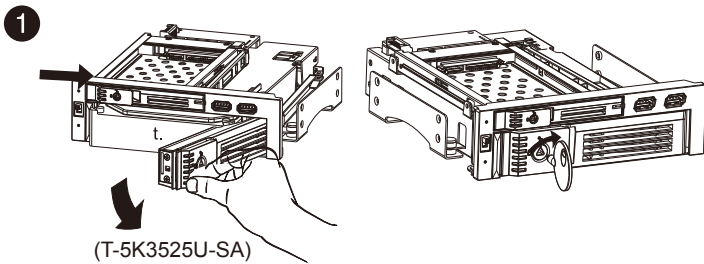
- 3.Fix two screws on each side, four screws in total.
- 4.Make sure the direction right while installing.

Connection :

- 1.Connect SATA power connector from power supply to T-5K3525U-SA
- 2.Insert one end of the SATA data cable to T-5K3525U-SA,another end(7P) to the motherboard.

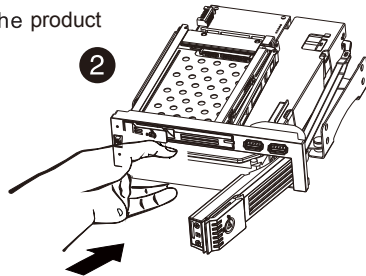


Inserting the Hard Drive:

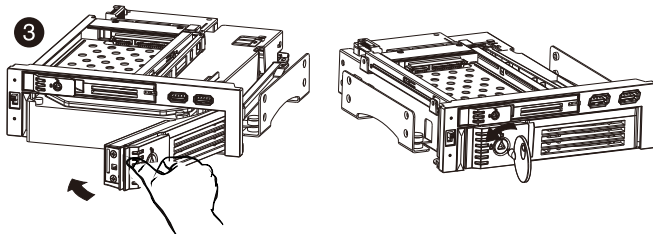


1. Release the door puller to eject the front door panel
Triangular lock unlock with the key (clockwise rotated 90 degrees), open the panel

2. Put the 2.5/3.5" HDD into the product



- 3.Close the front panel,Use the key "Counter-clockwise 90°" to lock the door.



1. After inserting HDD and closing the front door, carefully push the tray until it is seated into position.Excessive force may damage its mechanical parts.
- 2.If the HDD is inserted backward into the tray, forcing the device may damage the T-5K3525U-SA HDD cage.

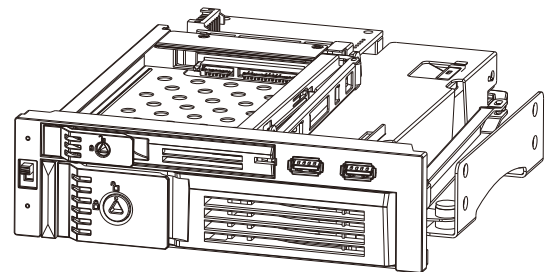
Removing the Hard Drive:

Smoothly open the front door.Carefully take the HDD out.

1. Use the key " clockwise 90° " to open the door.
2. Take the HDD out from HDD cage , and firmly close the front door .use the key " Anti-Clockwise 90° " to lock the door .

! The temperature of HDD may reach over 50°C. It's not hot enough to burn hand, but be careful.

1. Hard drive is a precise and accurate device.
Read the manual in advance and treat it carefully.
2. Do not eject the HDD while it is working.
3. Hold the HDD by its edge instead of touching the PCB on it.
4. iStarUSA will provide maintenance for the product malfunction problems,but not be responsible for any software or data loss accident.



4. Plug USB3.0 cable connector motherboard. If your motherboard does not support USB3.0 then you can use the alternate USB3.0 connector instead for USB3.0 operation only.

